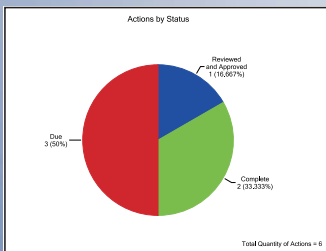


DFMEA, PFMEA AND BEYOND...

EXPERT SUPPORT FOR ALL TYPES OF FMEA AND FMECA

Xfmea[®]

Failure Modes and Effects Analysis (FMEA) and Failure Modes, Effects and Criticality Analysis (FMECA) are methodologies designed to identify failure modes for a product or process, to assess the risk associated with those failure modes, to rank the issues in terms of importance and to identify and carry out corrective actions to address the most serious concerns.

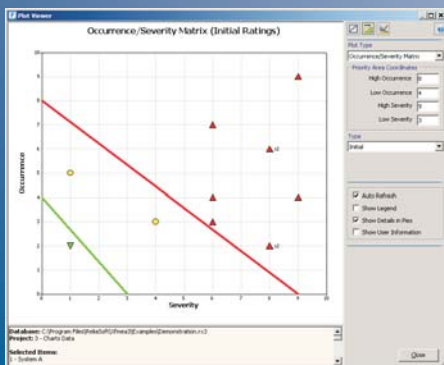


Type	Based on Profile	Description
L.1 - Design FMEA	32759 DFMEA	This sample project was prepared based on the Design FMEA (PFMEA) on page 37 of the SAE J1739 guidelines.
L.2 - Process FMEA	ADAC PFMEA	This sample project was prepared based on the Process FMEA (PFMEA) on page 70 of the ADAC FMEA guidelines.
L.3 - Machinery FMEA	32759 PFMEA	This sample project was prepared based on the Machinery FMEA (PFMEA) on page 45 of the SAE J1739 guidelines.

ReliaSoft's *Xfmea* software facilitates the FMEA/FMECA analysis process and provides flexible data management and reporting capabilities.

Potential Cause (Mechanism) of Failure	Ci	Di	RPN	Current Design Control	Control Type	Recommended Action(s)	Responsibility	Target Completion
Upper edge of protective max application specified for inner door panels is too low.	5	7	245	Vehicle general durability test with T-110 T-220 T-300	Detection	Add laboratory accelerated corrosion testing.	A. Take Body Engng	3/26/2005
Insufficient max thickness specified.	4	7	196	Vehicle general durability testing - as above.	Detection	Add laboratory accelerated corrosion testing.	A. Take Body Engng	3/26/2005
Inappropriate max formulation specified.	2	2	28	Physical and Chem Lab test - Report No. 2005.	Detection	Add team evaluation using production spray equipment and specified max.	A. Take Body Engng	3/26/2005
Entrapped air prevents max from entering corner/edge access.	5	8	200	Design and investigation with nonfunctioning spray head.	Detection	Add team evaluation using production spray equipment and specified max.	A. Take Body Engng	3/26/2005
Max application plug door diam holes.	3	1	21	Laboratory test using "worst case" max application and hole size.	Detection		A. Take Body Engng	3/26/2005

Potential Cause (Mechanism) of Failure	Ci	Di	RPN	Current Design Control	Control Type	Recommended Action(s)	Responsibility	Target Completion
Upper edge of protective max application specified for inner door panels is too low.	5	7	245	Vehicle general durability test with T-110 T-220 T-300	Detection	Add laboratory accelerated corrosion testing.	A. Take Body Engng	3/26/2005
Insufficient max thickness specified.	4	7	196	Vehicle general durability testing - as above.	Detection	Add laboratory accelerated corrosion testing.	A. Take Body Engng	3/26/2005
Inappropriate max formulation specified.	2	2	28	Physical and Chem Lab test - Report No. 2005.	Detection	Add team evaluation using production spray equipment and specified max.	A. Take Body Engng	3/26/2005
Entrapped air prevents max from entering corner/edge access.	5	8	200	Design and investigation with nonfunctioning spray head.	Detection	Add team evaluation using production spray equipment and specified max.	A. Take Body Engng	3/26/2005
Max application plug door diam holes.	3	1	21	Laboratory test using "worst case" max application and hole size.	Detection		A. Take Body Engng	3/26/2005



Document Created 10/23/2003 by User Name
Generated by ReliaSoft's Xfmea Software



ReliaSoft[®]



FMEA/FMECA DATA MANAGEMENT, ANALYSIS AND REPORTING

ReliaSoft's **Xfmea** software facilitates **Failure Mode and Effects Analysis (FMEA)** and **Failure Modes, Effects and Criticality Analysis (FMECA)** and provides flexible data management and reporting capabilities. **Xfmea** provides the data management and reporting so that your FMEA/FMECA team can concentrate on the analysis!

Support for Major Industry Guidelines plus Extensive Customization Options

Xfmea supports the major industry standards (such as SAE J1739, AIAG FMEA-3 and MIL-STD-1629A) for all types of FMEA/FMECA analysis, including Design FMEA, Process FMEA, FMECA, etc. In addition, the software provides extensive capabilities to customize the interface and reports.

Easy Data Entry and Time-Saving Shortcuts

The software provides numerous features to facilitate data entry/management and to help you leverage relevant information from existing analyses.

RPNs and Criticality Analysis for Risk Assessment

Xfmea supports the Risk Priority Number (RPN), Quantitative Criticality Analysis and Qualitative Criticality Analysis methods for risk assessment, with a host of features designed to facilitate decision-making based on these results.

Actions Management and Support for Team Effort

The software provides extensive actions management capabilities, including automated notifications via e-mail and flexible reports and charts for progress tracking. **Xfmea** also allows multiple users to work cooperatively on the same analysis, with the ability to limit access to authorized users, revision tracking features, and more.

Integrated Advanced Product Quality Planning (APQP) Modules

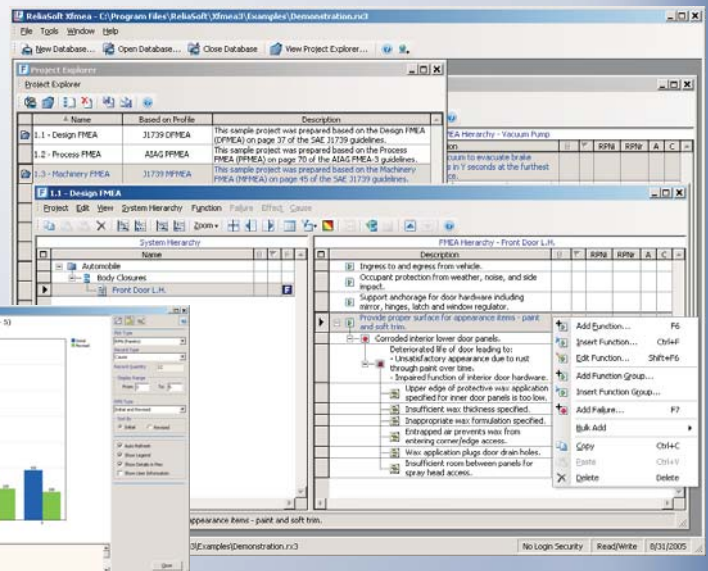
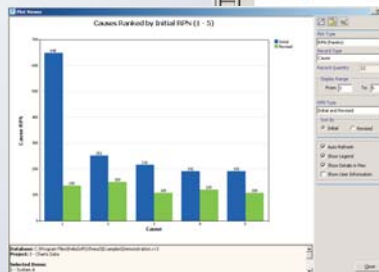
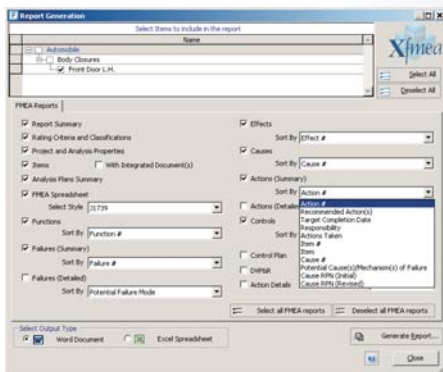
Xfmea facilitates integration between your FMEAs and related Advanced Product Quality Planning (APQP) activities, such as Control Plans, Process Flow Diagrams and DVP&Rs.

Flexible Reports, Charts and Queries

The software provides a complete array of print-ready reports (generated in Microsoft Word or Excel), graphical charts and flexible ad-hoc queries to display the results of your analysis in the most effective ways to support decision-making.

Benefits of automated FMEA software include:

- Facilitates data management, including the ability to easily re-use information from existing analyses.
- Easily generates charts and other reports (such as Actions by Due Date or Failure Modes by RPN).
- Helps to establish consistency throughout the organization.
- Provides a structure to allow multiple users to cooperate on the analysis.
- Provides integration with related analyses, such as process flow diagrams, Weibull++ analyses, BlockSim projects, etc.



Requirements: Windows NT, 2000 or XP. Microsoft Office 97 or higher for report creation.

Support: ReliaSoft's unparalleled after-sale support includes free telephone, fax and e-mail support. Free minor version updates are also included.

Integration: Weibull++, ALTA, BlockSim and RCM++.

Detailed product information is available on the Web:

<http://Xfmea.Reliasoft.com>



ReliaSoft



Reliability Office